

Welcome to CPS



What is CPS?



CPS: Center for Planetary Science

⇒ Research and education center for planetary science open to scientists in the world

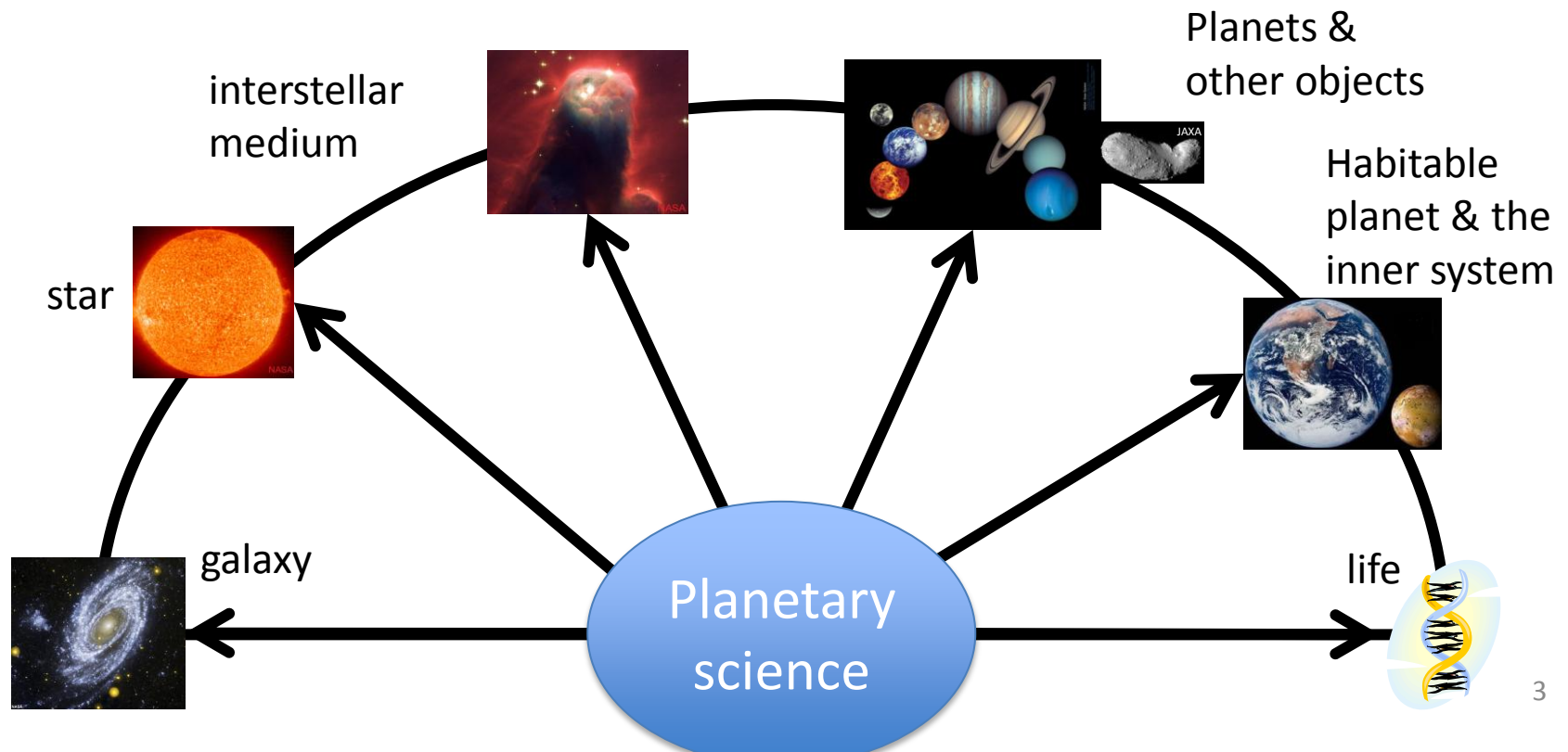
<https://www.cps-jp.org>

2007: CPS set up in the Faculty of Science, Kobe University.

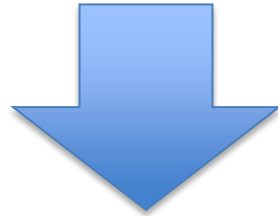
2008: CPS began in earnest with the help of the MEXT Global COE Program “Foundation of the International Education and Research Center for Planetary Science”.

What is Planetary Science?

Planetary science is an emerging interdisciplinary field, combining aspects of astronomy, geology, meteorology, biology, etc., with its ultimate goal to understand our place in the universe.



Each discipline has rapidly progressed and hence highly specialized. As a result, it has been getting difficult to grasp one unified picture of planetary science.



We need to make a tight link between professionals in different fields in order to overcome barriers between specialized fields!

Our approach!

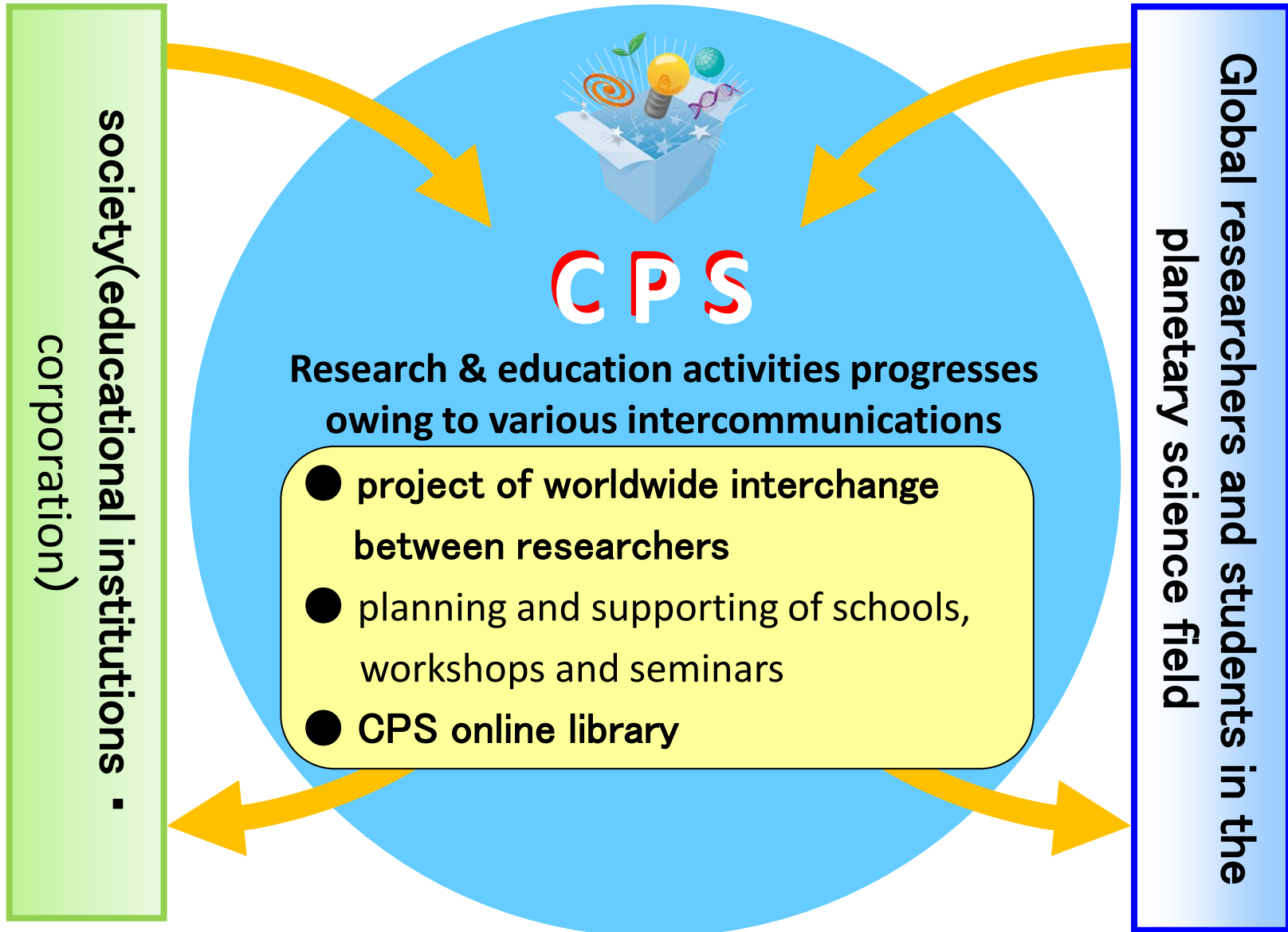
Founding the new center which:

- promotes international interactions between planetary scientists
- fosters the next-generation leaders with a broad perspective
- provides the up-to-date and comprehensive knowledge online

We provide “opportunities” to activate intercommunion.



CPS as a coordination center



Organization chart of CPS

Center for Planetary Science(CPS)

CG = Coordination Groups

Education &
Research CG

International
Cooperation
CG

Infrastructure
CG

Social
Interchange
CG

Future
Conception
CG

About CGs?

All CPS activities are conducted by five sectors calling the coordination group (CG). The members consist of young researchers and students.

Young researchers and postgraduates are substantially doing management and projects of CPS through the activity of CGs.



CPS activities bring up talents who can

-have not only their field but also wide view

-promote their research

-transmit information of their study toward the public

Directors

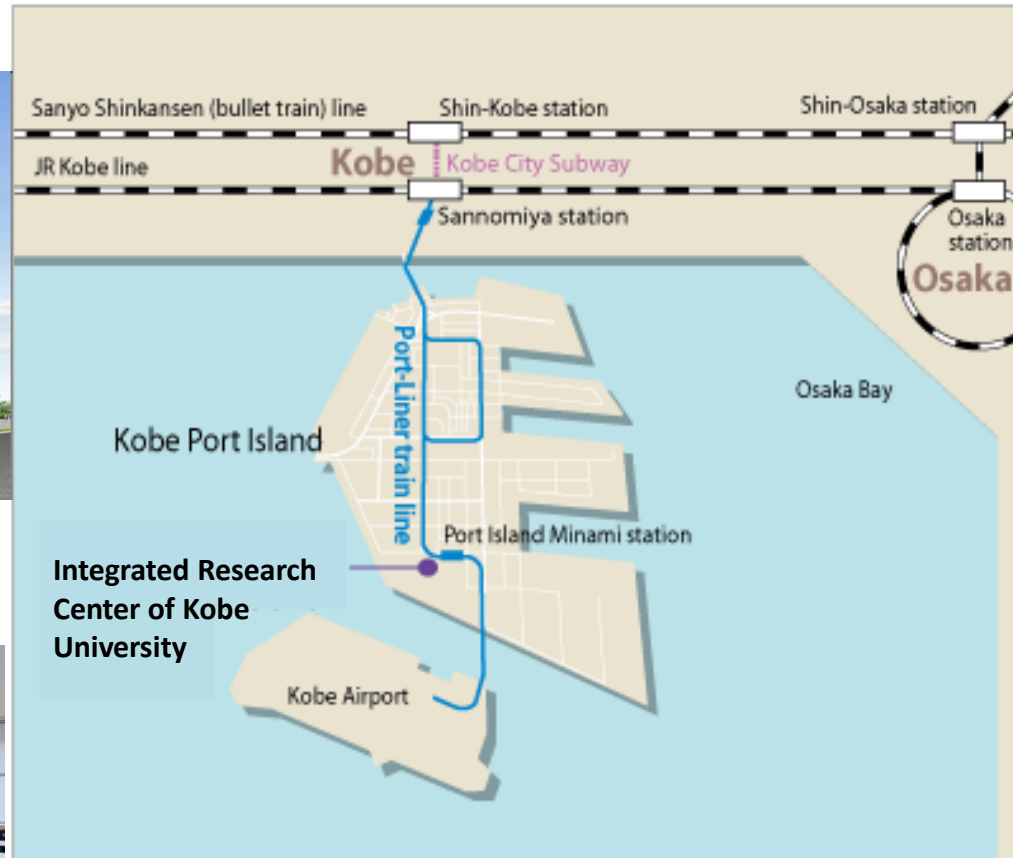
Director
Yoshitsugu Nakagawa
(Fac. of Sci., Kobe Univ.)



Vice Director
Yoshi-Yuki Hayashi
(Fac. of Sci., Kobe Univ.)

CPS ACCESS

CPS has the large saloon space and the conference room (60-100 persons) in which researchers can enjoy scientific discussion freely and vigorously, and also has 6 research rooms (the capacity is about 18 persons) in which they are able to be keen on their study. We hope that the CPS office will be the place where new collaborations are created and developed. We are looking forward to seeing all of you at CPS!



Visitor room



Conference room



Saloon

[Top Page](#)[About CPS](#)[News](#)[Members](#)[Access](#)[Seminars/Schools/Training Programs/Workshops](#)[mosir \(video/material archive\)](#)[Educ. & Res. CG](#)
[English](#) [Japanese](#)[Infrastructure CG](#)[Int'l Cooperation CG](#)[Social Interchange CG](#)[Future Conception CG](#)

Center for Planetary Science

Hot News

- [2011-06-07 Notification of Office Relocation](#)
- [2011-06-03 Job Opening: CPS Secretary \(Closing date: Jun. 10, 2011\)](#)
- [2011-04-28 Call for Applications: CPS Scientific Meetings Program](#)
- [2011-04-11 Call for Applications: CPS International School of Planetary Sciences \(Sep. 26-Oct. 1, 2011\) \(Closing date: May 18, 2011\)](#)
- [2011-03-02 Call for Applications: Global COE Research Assistants for FY2011 \(Closing date: Mar. 13, 2011\)](#)

[News archives](#)

Seminars, Schools, Training Courses, and Workshops

- [CPS Seminars \(every Wed. 15:00-16:00 under normal conditions\)](#)
- [International School of Planetary Sciences \(Sep. 26-Oct. 1, 2011\)](#)
- [Frontier Seminar in Planetary Science \(Japanese page only\)](#)
- [The School of the Universe \(Japanese page only\)](#)
- [Laboratory Training Course on Numerical Calculation and Data Analysis](#)
- [Laboratory Training Course on Impact Experiments \(Japanese page only\)](#)
- [Promotion of the Education for Planetary Exploration \(Japanese page only\)](#)

Welcome Guest

[Login](#)[Registration](#)[Lost Password?](#)

CPS as a coordination center

Center for Planetary
Science(CPS)

CG = Coordination Groups

Education &
Research CG

International
Cooperation
CG

Infrastructure
CG

Social
Interchange
CG

Future
Conception
CG

Introduction to Education and Research CG



ERCG Activities



This group promotes international exchanges of knowledge and gives assistance to host workshops and practical training courses of laboratory experiments.

- 1. Organizing scientific and educational meetings of planetary science (workshops, schools, and training programs)**
- 2. Holding the CPS seminar**
- 3. Archiving the various knowledge (multimedia contents) on planetary sciences**

1. Organizing scientific and educational meetings of planetary science



- Setting up and coordinating “CPS Planetary School” as an international school program, and other programs of school and training course targeted at various field for domestic and international researchers.
- CPS collect proposals of the program from the public, and ERCG coordinates them. CPS steering committee screens and adopts the proposals. Finally these proposals will be the GCOE program’s
 - Educational program (School and Training course)
 - Workshops,and CPS will arrange and manage these programs.
- Programs is open to not only CPS-managing universities(Kobe & Hokkaido) but also domestic and international researchers and students. It can contribute to drive the research activities, and the various knowledge on planetary sciences will be archived toward constructing an overall picture of origin, evolution, and diversity of planets and planetary systems in a consistent and comprehensive manner.
- These activities of the coordination aim to develop human resources for graduate students and young researchers with a performance of individually research as well as a perspective on the planetary science and constructing and managing ability of the infrastructure of education and research.

2. Holding the CPS Seminar

- Purpose: Providing an opportunity to open-minded discuss for cross-cutting research field.
- Broadcasting via teleconference system.
- Cooperating with the various knowledge archiving project “mosir”, a presentation material and videos are recorded as the multimedia contents, and distribute on the Internet.
- Past records, FY 2008=23 times, FY 2009=31 times, FY 2010=38 times.
- Every Wednesday at 15:00, in general.



3. Archiving the various knowledge (multimedia contents) on planetary sciences

- Presentation together with associated materials of meetings and seminars of planetary science are recorded and published on the Internet (mosir Project).
- Serving the opportunities for reviewing and self-learning, as well as providing educational and research resources beyond individual universities. Through these accumulation and organization of the various knowledge, we promote the activities to take a comprehensive vision for the origin, evolution, and diversity of the planetary system.
- Sending staff and equipments for recording and archiving to the school programs and workshops.
 - All of the school programs and CPS seminars are recorded and distributed.

The disaster culture of a Tsunami-devastated area

Yuki Sadaike (Hokkaido University)

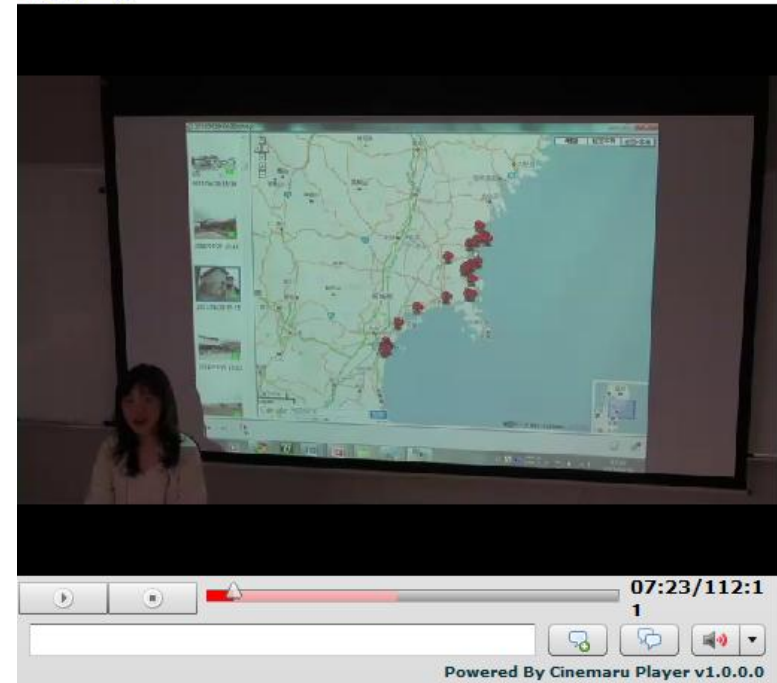
2011/05/12 CPS_Seminar@Hokkaido University, Science Bldg. #8, Cosmo-studio

Note: Slides 1 (pdf)

[タグ編集] ja Yuki_Sadaike CPS_Seminar(2011) CPS_Seminar 2011/05/12 2011

再生数:2 コメント:0

コメント一覧



CPS as a coordination center

Center for Planetary Science(CPS)

CG = Coordination Groups

Education &
Research CG

**International
Cooperation
CG**

Infrastructure
CG

Social
Interchange
CG

Future
Conception
CG

Introduction to International Cooperative CG



Introduction of ICCG activities



- This group supports international activities of people exchanges from long-term point of view to develop planetary science society.
 - Supports through the three programs
 - Overseas Invitation Program 《open》
 - supports inviting oversea researchers for activities that would lead continuous and cooperative activities on planetary science between oversea and domestic researchers through CPS.
 - Exchange program 《limited in CPS》
 - promotes research activities based on long-term point of view for development of planetary-science society through international people exchange with oversea research institutes.
 - Short term dispatch and invitation program 《limited in CPS》
 - supports activities which will promotes development of human resources and/or society in planetary science.

Cooperative institutes

- National Central University (Taiwan)
- Harvard University (USA)
- Max–Planck Institute for Nuclear Physics (Germany)
- Friedrich Schiller University of Jena
- Woods Hole Oceanographic Institution (USA)
- Observatoire Midi–Pyrenees (France)
- National University of Mongolia (Mongolia)
- Almaty State University (Kazakhstan)

Overseas Invitation Program



- This group supports international activities of people exchanges from long-term point of view to develop planetary science society.

– Examples:

- Invited a famous researcher on statistical treatment of three-body problem for a month and held a mini-workshop and held a mini-workshop.
- Invited two famous researchers and discuss the latest topics on the evolution of proto-planetary disks, which would trigger international collaboration.

Exchange program

- Promotes research activities based on long-term point of view for development of planetary-science society through international people exchange with oversea research institutes.
- Examples:
 - A Japanese postdoc was dispatched for a month to a research group in Harvard University and acquired skill on experiments and promoted cooperative activities.
 - A German grad student was invited for three month and discussed topics on dust evolution in the universe with wide range of Japanese research groups.

- This program supports activities which will promote development of human resources and/or society in planetary science.

- **Examples:**

- A Japanese grad student was dispatched to WHOI GFD Fellowship Program for ten weeks (every year).
- A CPS staff was dispatched to Asia–Pacific Astronomy Camp hosted by NCU (Taiwan) as an invited lecturer.

Tasks of ICCG

- Run of the three programs
 - Preparation of “Call for Proposal” document
 - Announcement of CfP
 - Receive and arrangement of submitted proposals
 - Ask the CPS steering committee to decide each proposal
 - Notification of the decision to the applicants
 - Receive the reports and post it to the HP
- Communication with cooperative institutions
 - Discuss how to strengthen the cooperation
- Taking care of guests invited by ICCG programs
- Presentation of CPS activities in abroad (booth at conferences, distribution of pamphlets)

CPS as a coordination center

Center for Planetary
Science(CPS)

CG = Coordination Groups

Education &
Research CG

International
Cooperation
CG

**Infrastructure
CG**

Social
Interchange
CG

Future
Conception
CG

Introduction to Infrastructure CG



Purpose

To support activities in education and research with Information technology

- Development and maintenance of software and hardware

Development/Maintenance

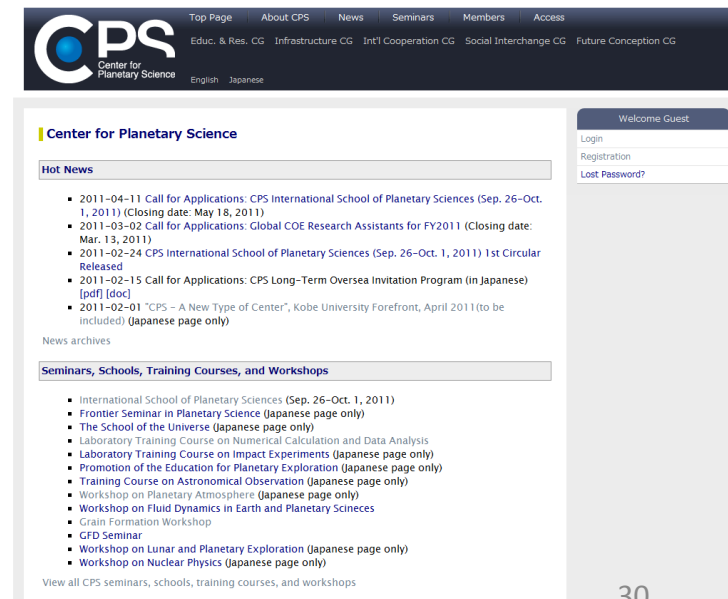


- CPS server
- Video conferencing system
- Computers for research
- Video recording system (with mosir project)

CPS Server (1/3)

Functionalities (1/2) :

- Website (<https://www.cps-jp.org/>)
 - School/Seminar Information
 - Archive of video and presentation materials of schools and seminars
 - Group/Project's web pages
 - WIKI



The screenshot shows the homepage of the Center for Planetary Science (CPS). The header features the CPS logo and navigation links for Top Page, About CPS, News, Seminars, Members, and Access. Below the header, there are links for Educ. & Res. CG, Infrastructure CG, Int'l Cooperation CG, Social Interchange CG, and Future Conception CG. The main content area is titled "Center for Planetary Science" and includes a "Hot News" section with several bullet points listing recent events and calls for applications. Below this is a "Seminars, Schools, Training Courses, and Workshops" section with a list of upcoming activities. A sidebar on the right contains a "Welcome Guest" section with links for Login, Registration, and Lost Password? The footer of the page includes the text "View all CPS seminars, schools, training courses, and workshops" and the page number "30".

CPS Server (2/3)

Functionalities (2/2) :

- Web-based management system
 - User/Group management
 - File resource management
 - Conference/Meeting management
 - ML management
 - Access control management
- Mail list
- Project management/Version control systems

CPS Server (3/3)

Utilization:

- 400 user accounts
- 50 groups
- 30 WIKIs
- 50 mail lists

Resources:

- Three HP ProLiant servers
- Six PCs
- 150TB of RAID storage

Video Conferencing System

Resources:

- Multi-point Control Unit
 - Max 20 points
- Fifteen Video conferencing systems



Computers for Research

Resources:

- Two HP ProLiant DL380 G5 servers
 - 16 cores and 64GB of memory
- Seven Newtech Supremacy RAID
 - 90 TB of RAID6 storage
 - 4Gb fibre channel



Construct a System

- We arrange **equipment** and establish **work procedure** for recording and publication of workshops / seminars / training courses in order to offer the environment that we can activate individual academic activities.
- Equipments
 - Introducing PCs and softwares to record the lectures in real-time.
 - Providing a internet server for browsing materials.
 - Developing server-side programs as needed.
- Work procedure
 - Not only experts but also beginners readily can do the recording activities.

- We make a “**library**” on the Internet to collect on-demand materials.
 - We record presentations in workshops, seminars and training courses on video and publish the movie and presentation files on the Internet.
 - These activities provide on-demand resources for education and research and contribute to the inter-university and international education.
 - Additionally, the accumulation of knowledge and findings encourage activity overlooking origin, revolution and diversity of planetary systems as a whole and lead the way to the general theory of planetary systems
- We send the equipment and human material for recording

Visit us! → <https://www.cps-jp.org/~mosir/pub/>

MOSIR Project

What's new

Itsuki Sakon (The University of Tokyo)	Yuki Sadaike (Hokkaido University)	Satoshi Okuzumi (Nagoya University)	Takaya Tamura (Kyoto University)
Observing the Sites of Dust Formation in Circumstellar Environments	The disaster culture of a Tsunami-devastated area	Lecture by Satoshi Okuzumi	Gas Dispersal of Protoplanetary Disks due to FUV and EUV irradiation from a Nearby Massive Star

Contents list

year 2001	year 2002	year 2003	year 2004
year 2005	year 2006	year 2007	year 2008
year 2009	year 2010	year 2011	

Latest seminars
Usually added in
every Wednesday

Libraries in each year

CPS as a coordination center

Center for Planetary
Science(CPS)

CG = Coordination Groups

Education &
Research CG

International
Cooperation
CG

Infrastructure
CG

**Social
Interchange
CG**

Future
Conception
CG

Introduction to Social Interchange CG



Goal of SICG

Provide knowledge & skills that young researchers can advance into various fields

Advertising of the planetary science to public

1. interchange with companies
2. making of pamphlets
3. publicity campaign



The spread of
planetary science

Service to the planetary science community

1. practical trainings
2. holding of seminars to learn a variety of sense of values



Upbringing of the researcher with a variety
of sense of values and skills

Main activities of SICG

- Creation of booklets & posters of CPS
- interchange with companies & Museum of Science
- lectures to public -> science café,
- SICG seminars
- practical trainings
 - > Japanese writing & English presentation training

Advertising to public

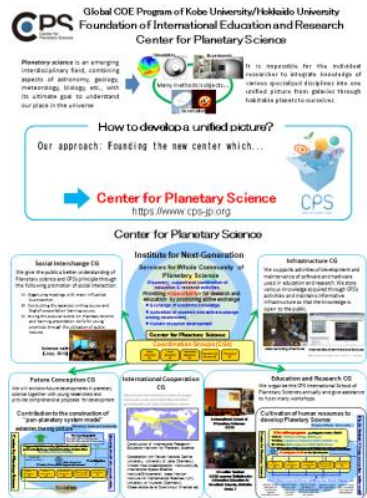


- 1.meeting with sharp corporation →
- 2.Creation of booklets & posters of CPS



シャープの研究開発概要

2011年 2月23日
シャープ株式会社
取締役 兼 専務執行役員 東京支社長
太田 賢司



CPS poster



CPS booklet

3.Outreach

Science cafe



サイエンスカフェ(主催:神戸大学 惑星科学研究センター)
雲と宇宙の間の世界〜成層圏・中間圏の大気〜
講演者: 西澤誠也(神戸大学)

飛行機の中から見える雲の上の世界は、どうやら我々の知る大気運動とは違ったり
しい。航空機の世界では気候学的な関心が強いものの、一般に、大気学は人が?

日時: 2010年7月1日(水)19:00 - 20:30
場所: UCCカフェコンフォート 神戸市庁舎店
定員: 30名(定員になり次第終了)
対象: 高校生以上
参加費: 1000円(ケーキセット代)
申込先: 宇宙天文観望会事務局 / www.ccp-jp.org / sig/tanabata.pdfをご覧ください。

0501285429 写真: NASA 協力: 神戸大学サイエンスシップ、WOB株式会社 CPS



Kobe astro club @ Kobe science museum



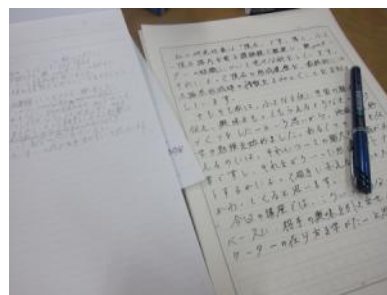
Service to the community

1. practical trainings

English presentation training

Japanese writing training

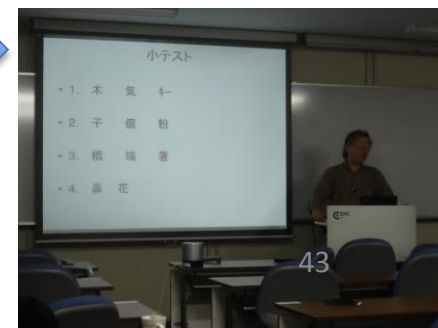
upskilling program for young researchers



2. holding of seminars to learn a variety of sense of values

← Atsushi Oketa (Tokyo Broadcasting System Television, Inc.), "Science and Media, the history of myself -unify the natural science and the social science-"

Yoshitaka Yamashita (Hokkaido University), "Kansaiben as a foreign language" →



CPS as a coordination center

Center for Planetary
Science(CPS)

CG = Coordination Groups

Education &
Research CG

International
Cooperation
CG

Infrastructure
CG

Social
Interchange
CG

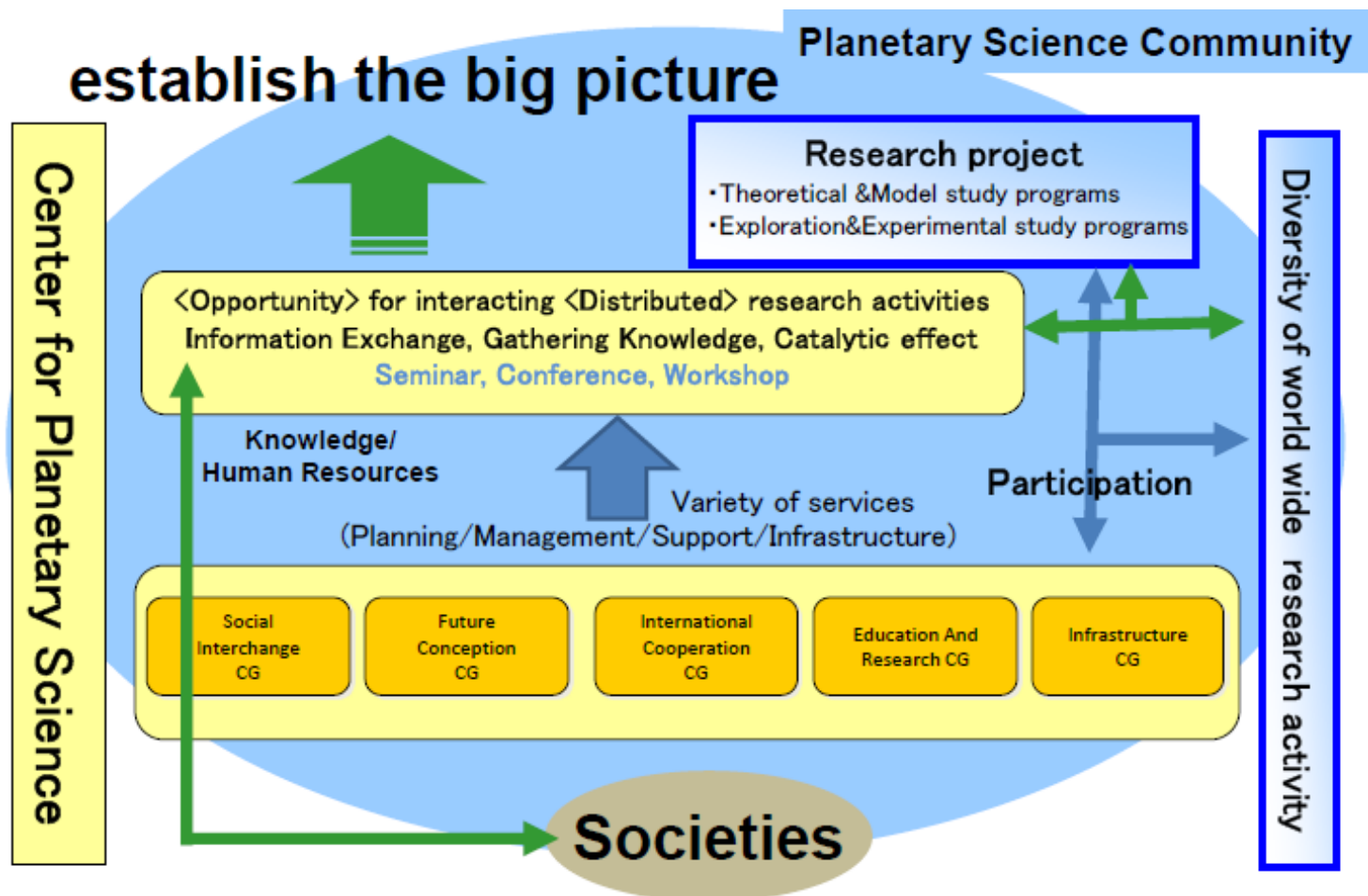
**Future
Conception
CG**

Introduction to Future conception CG



Purpose & activity

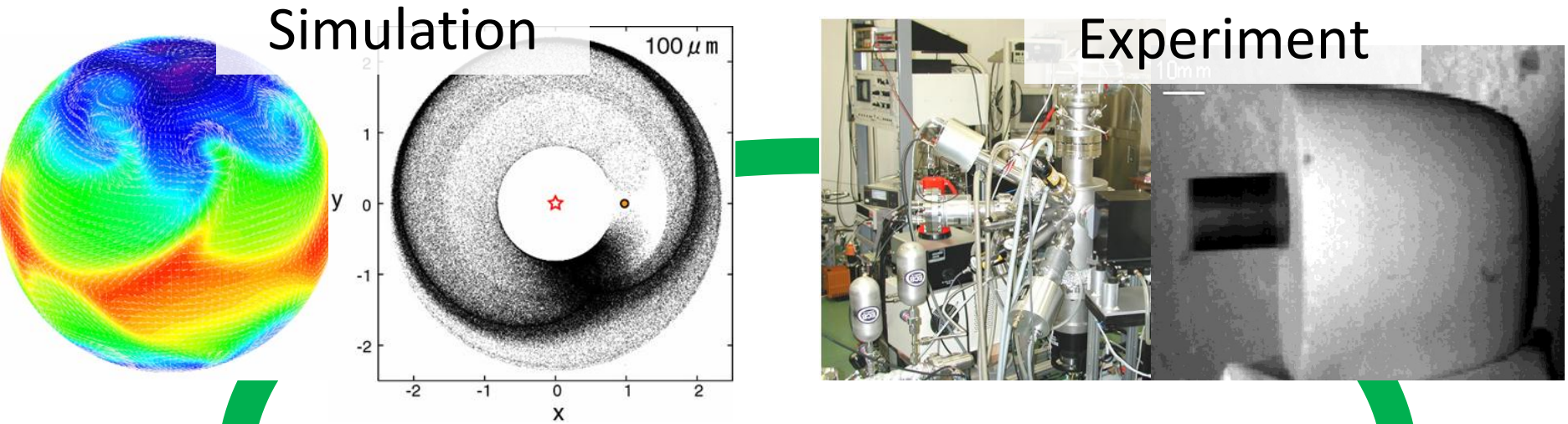
- This group will envision future developments in planetary science together with young researchers and provide necessary propositions.



Main activities

- **ISSI (International Space Science Institute)**, visit, Date: September 22, 2009
- **Isaac Newton Institute for Mathematical Sciences**, visit, Date: September 24, 2009
- **IPMU (Institute for the Physics and Mathematics of the Universe)**, visit, Date: January 25, 2010
- **NAOJ (National Astronomical Observatory of Japan)**, Visit, Date: June 23, 2010
- **LPI**, Visit, Date: February 28–March 1, 2011
- **KAVLI ITP**, Visit, Date: March 3, 2011
- **Strategic Universe Conference, Task Force Meeting**, Participation, Date: May 13, 2011
- **Experts Research Committee on the Space Development Strategy**, Participation, Date: May 30, 2011

Various methods



Planetary science is currently challenging to construct a "pan-planetary system model".

