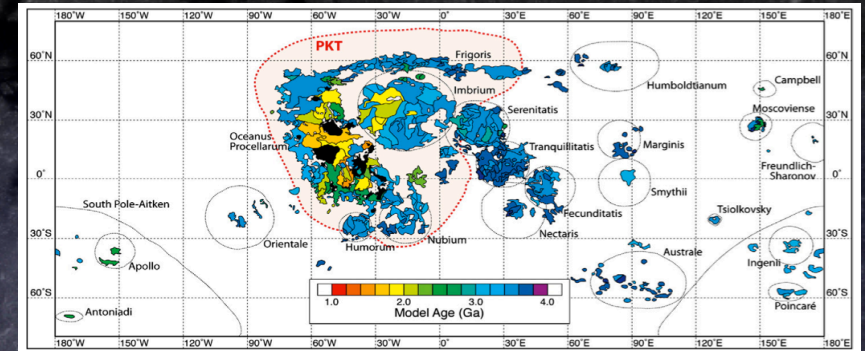


P-22

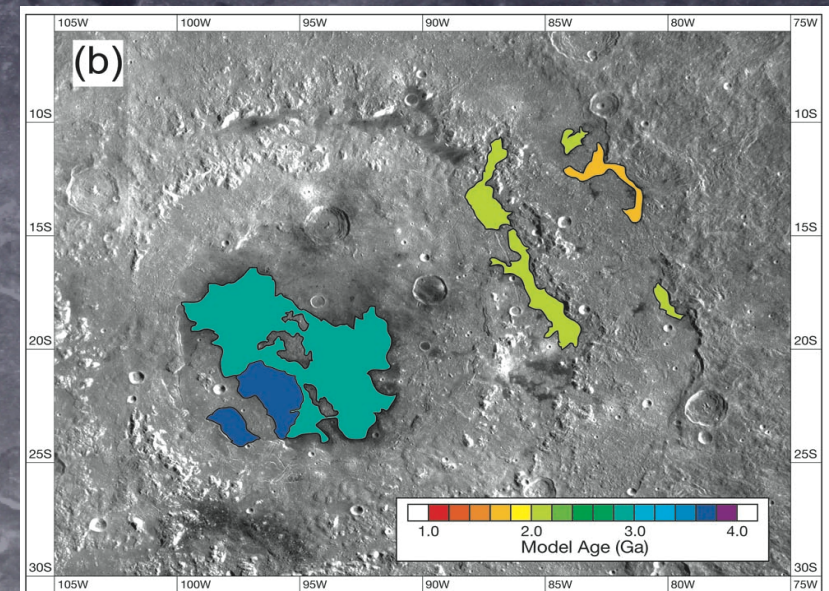
Young mare volcanism in the Orientale region contemporary with ~2Ga PKT volcanism peak period

Yuichiro Cho
University of Tokyo

- The ages of mare basalt in the **Orientale basin** were estimated using High-resolution observation by **SELENE Terrain Camera**.
- The uniform age (~2 Ga) of the mare deposits around the Orientale basin rims, which are rather far away from the PKT, suggests that the **suspected peak of volcanic activity at around 2 Ga** was not limited to the regions with enhanced radioactive elements at the surface (PKT) but extended to other regions.



Model age distribution on the nearside of the Moon (Morota+ 2011, Hiesinger+ 2008).



Model age distribution obtained in this study.